


# Magnetic Thickness Detector

**Thru-tubing**  
**Three Pipe**  
**Thickness Evaluation**


-  Quantitative simultaneous three pipe thickness evaluation.

## About This Product

The WOS Magnetic Thickness Detector (MTD) is a 1-11/16 inch O.D electromagnetic corrosion measuring instrument primarily run through tubing with the unique ability to simultaneously inspect tubing and the casings behind it. The integrity of the casing string can be evaluated with neither the requirement for a costly workover rig nor the time-consuming removal of the tubing completion. WOS's next-generation MTD tool can evaluate quantitative thickness measurements of up to three concentric pipes. The state-of-the-art instrument combines a high-power transmitter, improved signal-to-noise electronics, and fully configurable acquisition. This flexible approach allows a wide range of evaluations under different conditions and conveyance systems.

## Benefits

- Log up to 18-5/8" casing with the same 1-11/16" tool.
- Fully combinable with our full range of logging tools, allowing for one-pass results.
- Cut down on costly runs.
- Capable of evaluating quantitative thickness measurements up to three concentric pipes.
- Slim hole design eliminates the need for pulling production tubing.
- Identify corrosion points of interest in real-time on location.

 Slim hole design eliminates the need for pulling production tubing to log.

# Magnetic Thickness Detector

## Magnetic Thickness Detector Specs

Max OD	1-11/16"
Length	44.3"
Temperature Rating	4F - 350F
Pressure Rating	15,000 PSI
Logging Speed (single pipe)	30ft/min
Logging Speed (double pipe)	8ft/min
Logging Speed (triple pipe)	6ft/min
Measuring Range	2.362" - 18.625"
Temp Resolution	Less than ±1°C
Logging Mode	SRO Hybrid, Time, Depth

## Wall Thickness Measurement

### First Pipe Measurement

Maximum Pipe Wall Thickness	.9"
Thickness Accuracy	0.0075"
First Pipe (2-7/8") minimum aperture	0.5"

### Second Pipe Measurement

Maximum Pipe Wall Thickness	1.2"
Thickness Accuracy	.01"
Second Pipe (2-7/8" - 7") minimum aperture	1.5"

### Third Pipe Measurement

Maximum Pipe Wall Thickness	1.5"
Thickness Accuracy	.06"
Third Pipe (2-7/8" - 13-3/8") minimum aperture	3"

Minimum aperture is the minimum detectable height of a circumferential slot (100% loss)



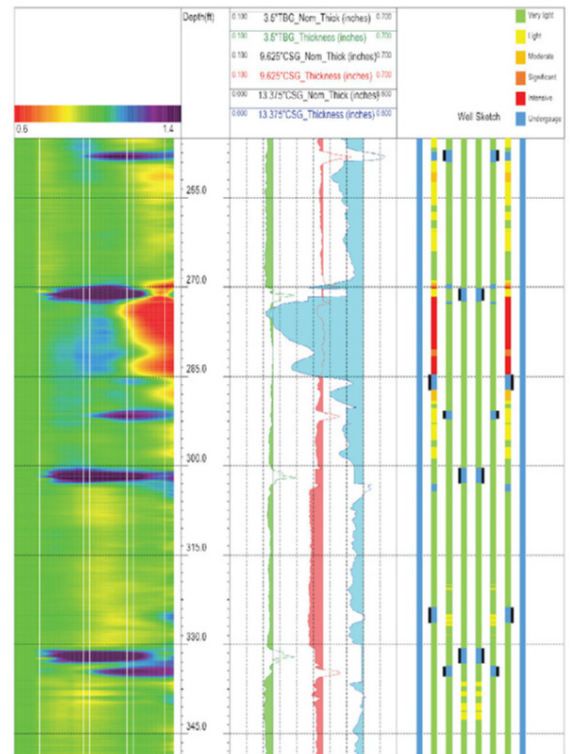
Fully combinable with our full range of logging tools, allowing for one-pass results.

## Features

- Slim tool with 1-11/16" O.D.
- Fast logging of single strings.
- Quantitative three pipe thickness evaluation.
- Qualitative evaluation of fourth pipe.
- A fully configurable tool caters to a wide range of downhole conditions.
- Data can be transmitted in real-time to the surface or stored downhole during memory logging.

## Combinable Tools

- Multi-finger Calipers
- Magnetic Collar Locator
- External probe temperature measurement
- Gamma-Ray
- Radial Bond Tool



SCAN CODE TO VIEW PRODUCT PAGE